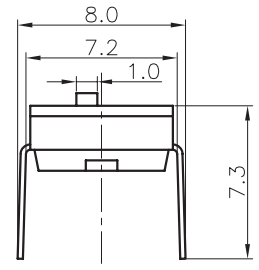
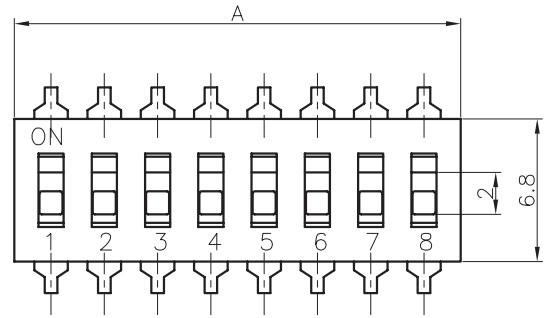


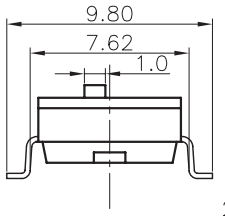
REV.	DESCRIPTION	DRAWN	CHECKED	APPROVED
A	NEW RELEASE	JLH 12/03/05		

NOTES:

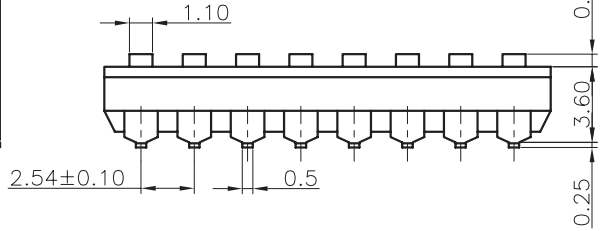
- Contact resistance: 30mΩ max.
- Dielectric withstanding voltage: 250 VAC 1minute.
- Insulation resistance: 1000 MΩ min.
- Temperature range: -20°C ~ +70°C.
- Product number code:



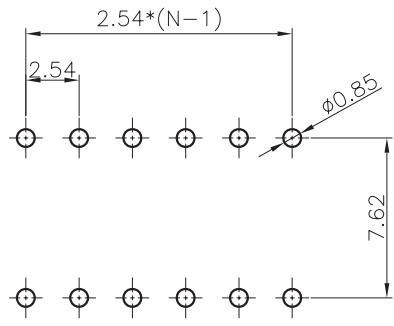
V/T TYPE



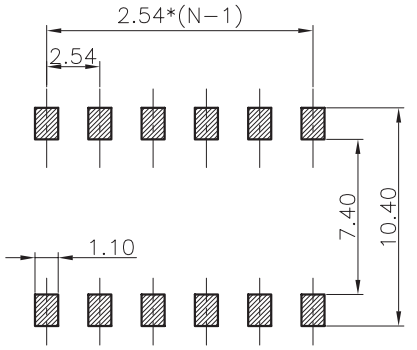
SMT TYPE



Positions	DIM.A
2	6.04
3	8.58
4	11.12
5	13.60
6	16.20
7	18.74
8	21.28
9	23.82
10	26.36



V/T TYPE



SMT TYPE

RECOMMEND P.C.B LAYOUT
Tolerance±0.05
N: Number of contacts/2

GENERAL TOLERANCE		ANGLE TOLERANCE		PROJECTION	UNIT	TITLE	
X.	±0.60	X.	±5°		mm	SWITCH PITCH 2.54mm SMT TYPE	
.X	±0.38	.X	±3°		SHEET SIZE		A4
.XX	±0.25	.XX	±2°		SHEET SIZE		A4
DRAWING TYPE		CUSTOMER					
SCALE		1:1		SHEET 1 OF 1			
DRAWING NO.							