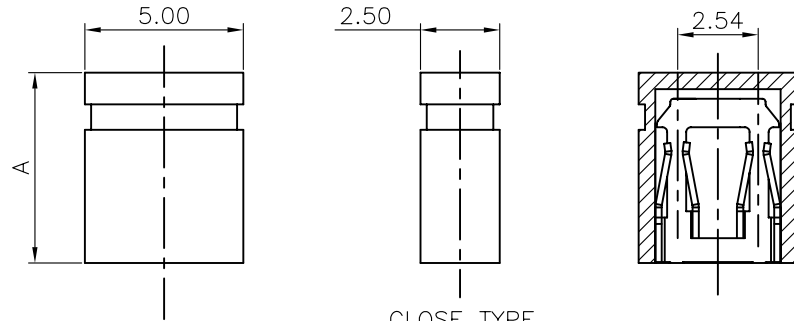
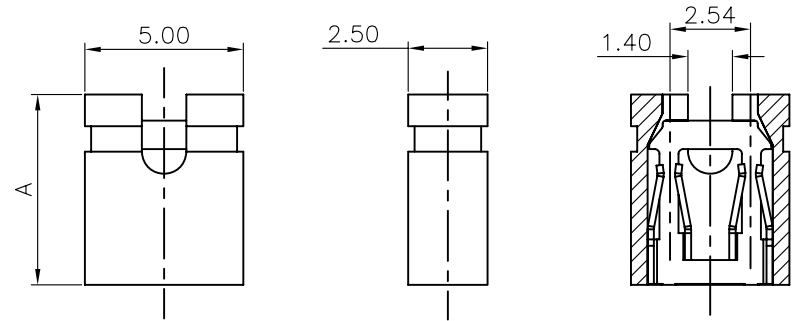


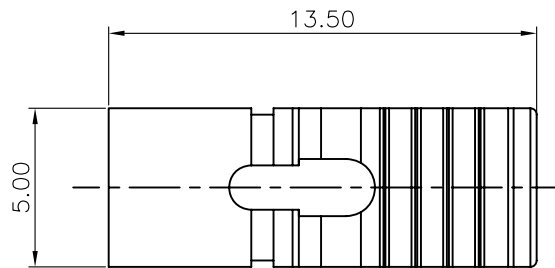
REV.	DESCRIPTION	DRAWN	CHECKED	APPROVED
A	NEW RELEASE	LL 12/04/06'		



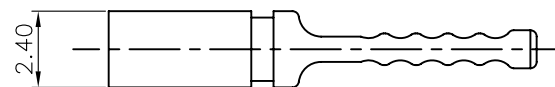
CLOSE TYPE



OPEN TYPE



LONG TYPE



NOTES:

1. SPECIFICATION:

- 1.1 CONTACT RESISTANCE: 30mΩ MAX.
- 1.2 DIELECTRIC WITHSTANDING VOLTAGE: 250V AC(rms) FOR 1 MINUTE.
- 1.3 INSULATION RESISTANCE: 500MΩ Min.
- 1.4 OPERATING TEMPERATURE: -40°C~+105°C.

2. PRODUCT NUMBER CODE:

DS1027 - X X X X X

PROFILE HEIGHT(DIM A):  
0:6.0mm  
1:6.47mm

CONTACT PLATING:  
F1: FULL GOLD FLASH  
N: NICKEL  
2: GOLD+NICKEL

HOUSING COLOR:  
B: BLACK U:BLUE Y:YELLOW  
W: WHITE E:GREEN R:RED

HOUSING TYPE:  
A:OPEN B:CLOSE L:Long

No.OF CONTACTS:  
2: 2pin

SERIES No:  
DS1027

GENERAL TOLERANCE		ANGLE TOLERANCE	
X.	±0.60	X.	±5°
.X	±0.38	.X	±3°
.XX	±0.25	.XX	±2°

PROJECTION		TITLE	MINI JUMPER PITCH 2.54mm
UNITS	mm		
SHEET SIZE	A4	SERIES	DS1027 SERIES

DRAWING TYPE	CUSTOMER		
SCALE	1:1	SHEET	1 OF 1
DRAWING NO.	C-DS1027-XXXXX		

晨翔电子有限公司  
CONNFLY CONNFLY ELECTRONIC CO. LTD