

SPECIFICATION

Current Rate:3 AMP
 Insulation Resistance:1000M Ω Min.
 Contact Resistance:20m Ω Max.
 Dielectric Voltage:1000V AC for one minute
 Operation Temperature:-40°C to +105°C

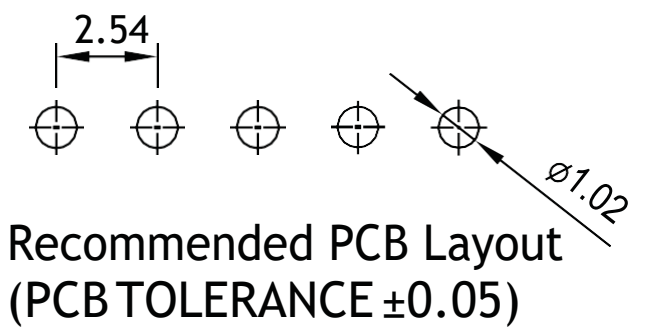
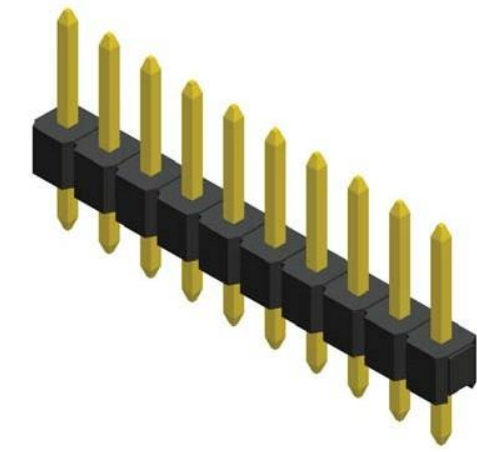
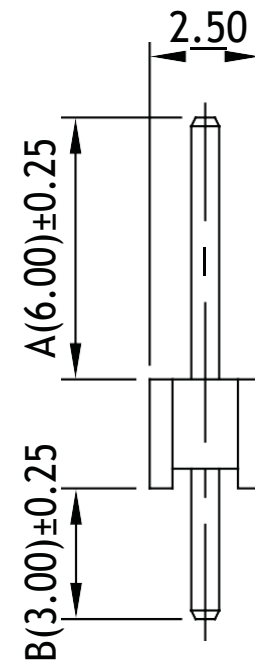
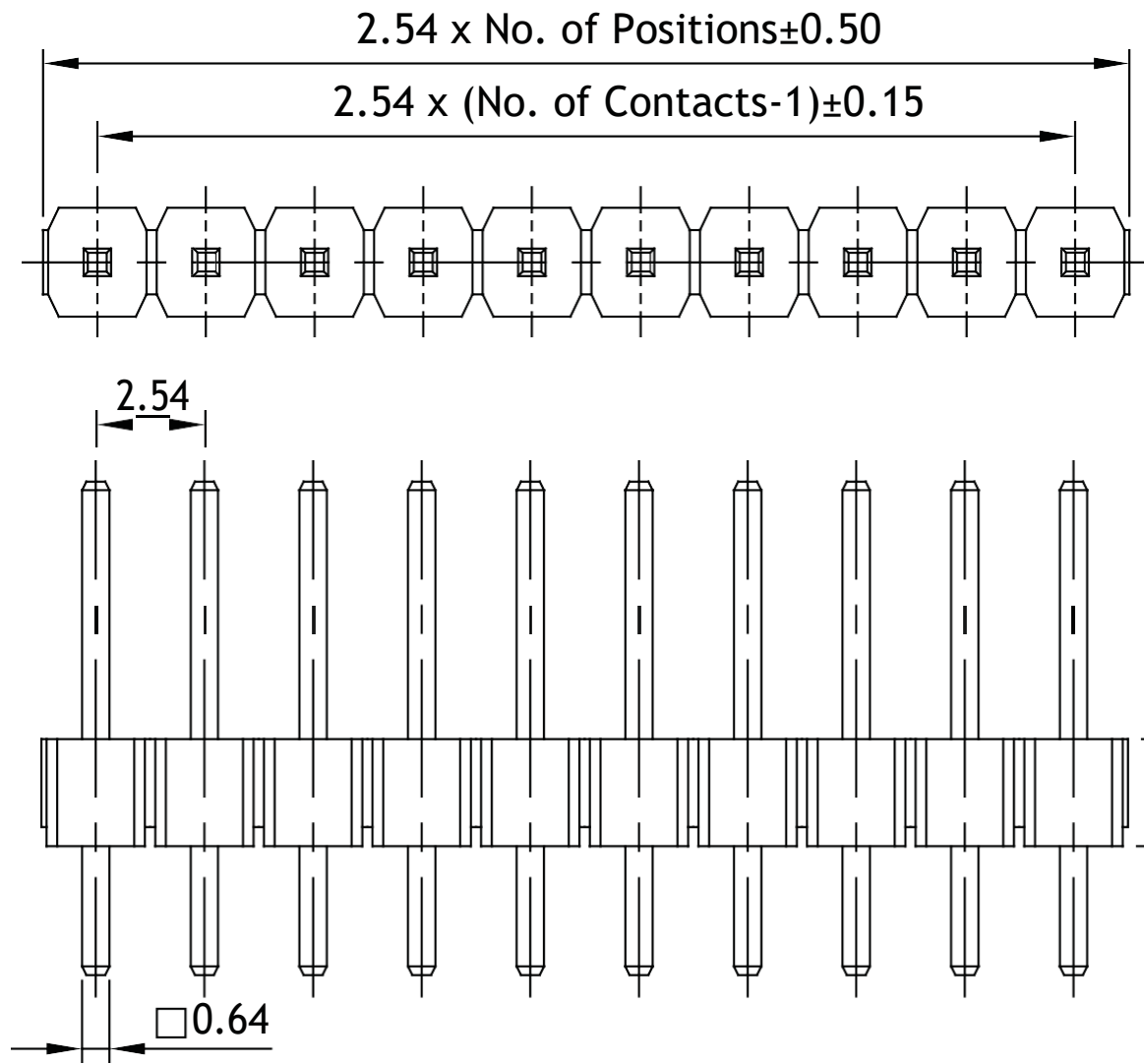
Standart height (H) = 2.5

MATERIAL

Insulator:Polyester,UL 94V-0
 Standard:PBT or Nylon 6T
 Contact Pin:Copper Alloy
 Contact Plating:Gold Flash all over

PLS-xx

Pin Header 2.54mm 1 Row H=1.5/1.7/2.5mm Straight Type



PLD-xx

Pin Header 2.54mm 2 Row H=1.5/1.7/2.5mm Straight Type

