



## Features

- Balanced TRIGARD®
- Approximately 8 mm diameter, 11 mm long
- UL recognized
- Custom configurations available
- High surge current rating
- Stable breakdown throughout life
- RoHS compliant\* version available

## Applications

- Telecommunications
- Industrial electronics
- Commercial electronics
- Consumer electronics
- Automotive, aircraft, military electronics

## 2026 Series - 3-Pole Gas Discharge Tube

### Characteristics

Test Methods per ITU-T (CCITT) K.12, IEEE C62.31, RUS PE-80, Telcordia GR 1361

Characteristic	Model No.						
	2026-07	2026-09	2026-15	2026-20	2026-23	2026-25	2026-26
DC Sparkover $\pm 20\%$ @ 100 V/s	75 V	90 V	150 V	200 V	230 V	250 V	260V <sup>1</sup>
Impulse Sparkover							
100 V/ $\mu$ s	275 V	275 V	350 V	425 V	450 V	475 V	475 V
1000 V/ $\mu$ s	700 V	600 V	575 V	625 V	650 V	700 V	700 V

Characteristic	Model No.					
	2026-30	2026-35	2026-40	2026-42	2026-47	2026-60
DC Sparkover $\pm 20\%$ @ 100 V/s	300 V	350 V	400 V	420 V	470 V	600 V
Impulse Sparkover						
100 V/ $\mu$ s	500 V	625 V	675 V	725 V	800 V	925 V
1000 V/ $\mu$ s	775 V	875 V	925 V	1000 V	1100 V	1250 V

Impulse Transverse Delay.....	1000 V/ $\mu$ s.....	< 75 ns
Insulation Resistance .....	100 V (50 V for Model 2026-07 & 2026-09).....	> $10^{10} \Omega$
Glow Voltage .....	10 mA.....	~ 70 V
Arc Voltage .....	1A.....	~ 10 V
Glow-Arc Transition Current.....		< 0.5 A
Capacitance .....	1 MHz.....	< 2 pF
DC Holdover Voltage <sup>2</sup> .....	>135 V, (52 V for Model 2026-07 & 2026-09,.....	< 150 ms
	80 V for Model 2026-15)	
Impulse Discharge Current.....	40000 A, 8/20 $\mu$ s <sup>3</sup> .....	1 operation minimum
	20000 A, 8/20 $\mu$ s.....	> 10 operations
	5000 A, 10/350 $\mu$ s.....	1 operation
	1000 A, 10/1000 $\mu$ s.....	> 400 operations
Alternating Discharge Current .....	130 Arms, 11 cycles <sup>3</sup> .....	1 operation minimum
	20 Arms, 1 s.....	> 10 operations
Operation and Storage Temperature.....		-40 to +90 °C
Climatic Category (IEC 60068-1).....		40/ 90/ 21

Optional Switch-Grade Fail-short device available.

### Notes:

- **UL recognized component, UL File E153537.**
- Model number marking on tube: 26-xxx V.
- The rated discharge current for TRIGARD® Gas Discharge Tubes is the total current equally divided between each line to ground.
- Sparkover limits after life  $\pm 25\%$ , IR  $> 10^8 \Omega$  (-25 %, +30 % for Model 2026-07, 2026-09 and 2026-60).
- Line to Line voltage is approximately 1.8 to 2 times the stated Line to Ground breakdown voltage.
- At delivery AQL 0.65 Level II, DIN ISO 2859

<sup>1</sup> Tube meets BT requirement Type 14 A/1 (210-310 V).

<sup>2</sup> Network applied.

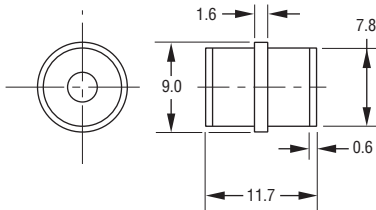
<sup>3</sup> DC Sparkover may exceed  $\pm 25\%$  after discharge, but will continue to protect without venting.

# 2026 Series - 3-Pole Gas Discharge Tube

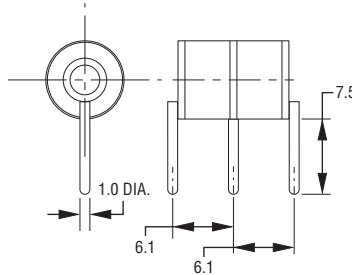
**BOURNS®**

## Product Dimensions (additional lead form configurations available upon request)

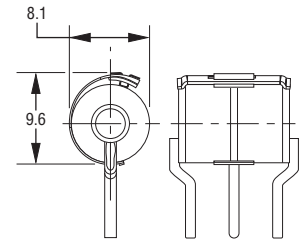
**2026-XX-A**



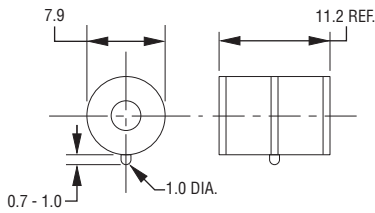
**2026-XX-C4**



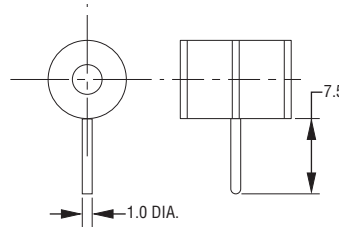
**FAIL-SHORT CONFIGURATION  
2026-XX-C2F SHOWN**



**2026-XX-A1**

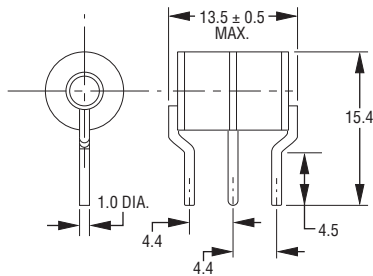


**2026-XX-C8**

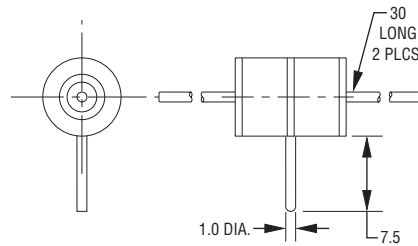


DIMENSIONS: MILLIMETERS  
UNITS WITH LEADS ARE BASED ON THE  
2026-XX-A1 BODY.

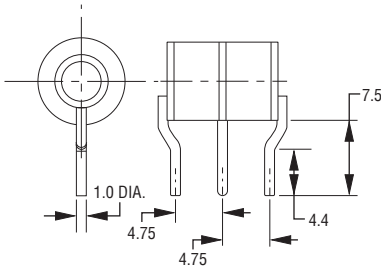
**2026-XX-C2**



**2026-XX-C  
1.0 mm dia. lead wire**



**2026-XX-C3**



## How to Order

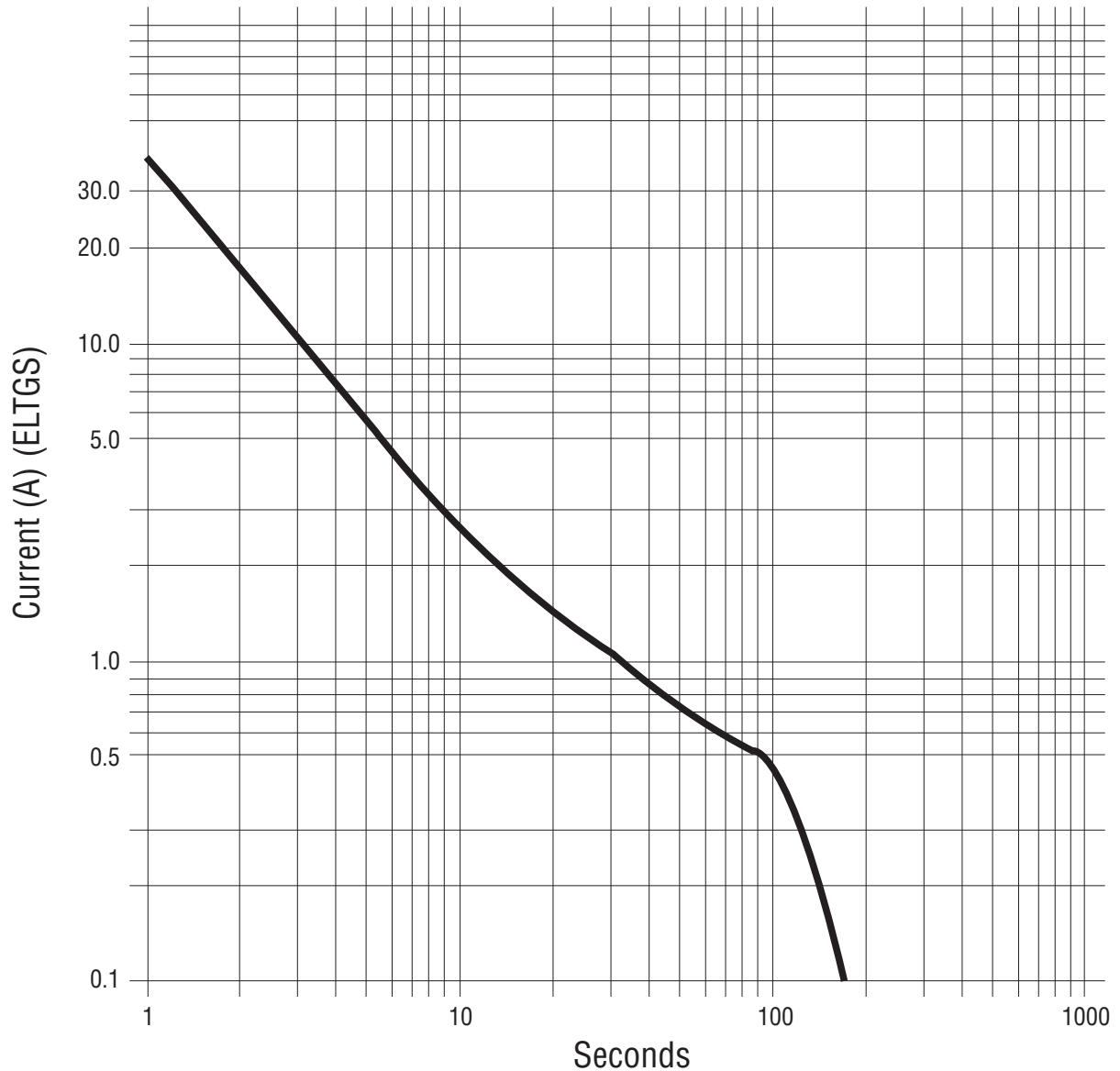
	<b>2026 - nn - x n F LF</b>			
Model Number	nn	x	n	F LF
Designator				
Voltage (Divided by 10)				
07 = 75 V	30 = 300 V			
09 = 90 V	35 = 350 V			
15 = 150 V	40 = 400 V			
20 = 200 V	42 = 420 V			
23 = 230 V	47 = 470 V			
25 = 250 V	60 = 600 V			
26 = 260 V				
Leads				
A = None				
C = 1 mm				
Lead Shape				
(See Product Dimension Drawings)				
Fail-Short Option				
Blank = Standard Product				
F = With Fail-Short Mechanism				
RoHS Compliant Option				
Blank = Standard Product				
LF = RoHS Compliant Product				

Specifications are subject to change without notice.  
The device characteristics and parameters in this data sheet can and do vary in different applications and actual device performance may vary over time.  
Users should verify actual device performance in their specific applications.

## 2026 Series - 3-Pole Gas Discharge Tube

**BOURNS®**

### Switch-Grade Fail-short Device Shorting Curve 2026-XX-XF



ELTGS = Each Line to Ground Simultaneously

NOTE: When using a GDT fail-short device, it is imperative that all components associated and connected to the GDT with failsafe be tested in their respective completely integrated environment (finished product) to assure desired operation.

REV. 01/14

Specifications are subject to change without notice.

The device characteristics and parameters in this data sheet can and do vary in different applications and actual device performance may vary over time. Users should verify actual device performance in their specific applications.